

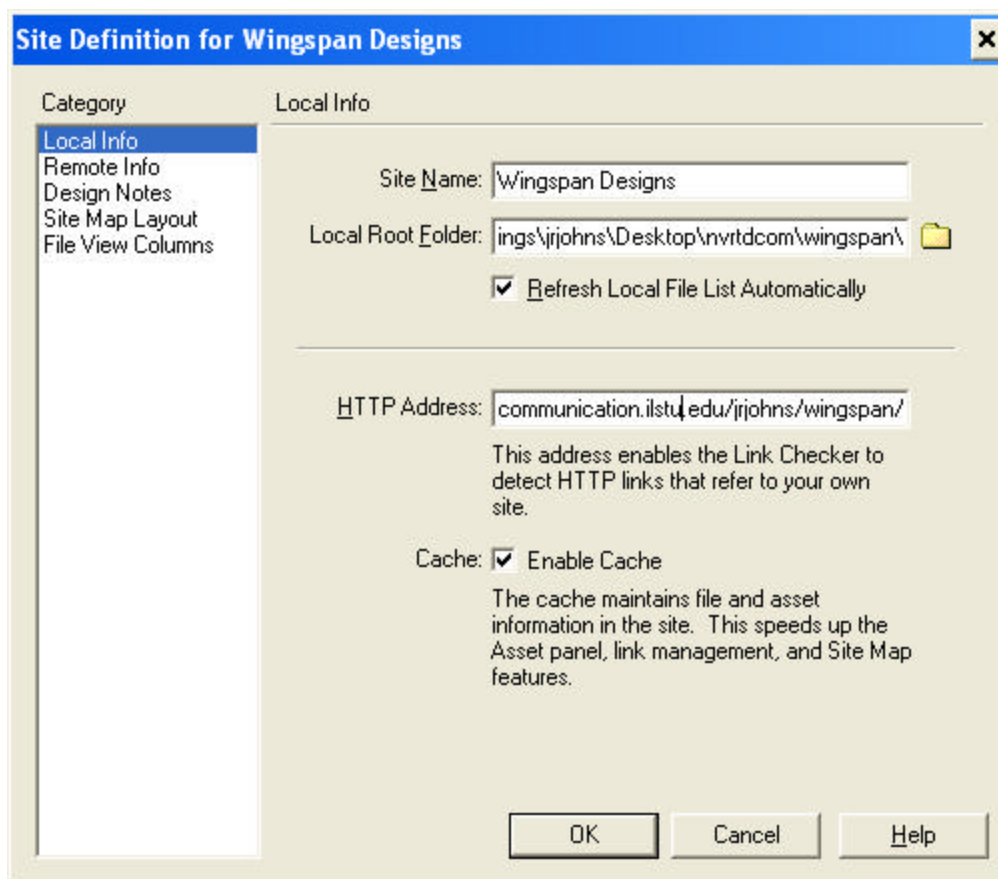
Defining your site in Dreamweaver

Step 1.

In Dreamweaver use the Site menu and select **New Site**

Step 2.

Name your site, choose your Local Root Folder, and if available enter your HTTP Address.



Step 3.

Enter your remote info here. This is how you connect with your Web Server. FTP access to servers like Geocities (shown below) is a common way to connect. Those logging into domains (like ISUNET) may be using the Local/Network instead of FTP access to connect to servers. If you don't have Remote Access you should still use Dreamweaver to manage your site locally.

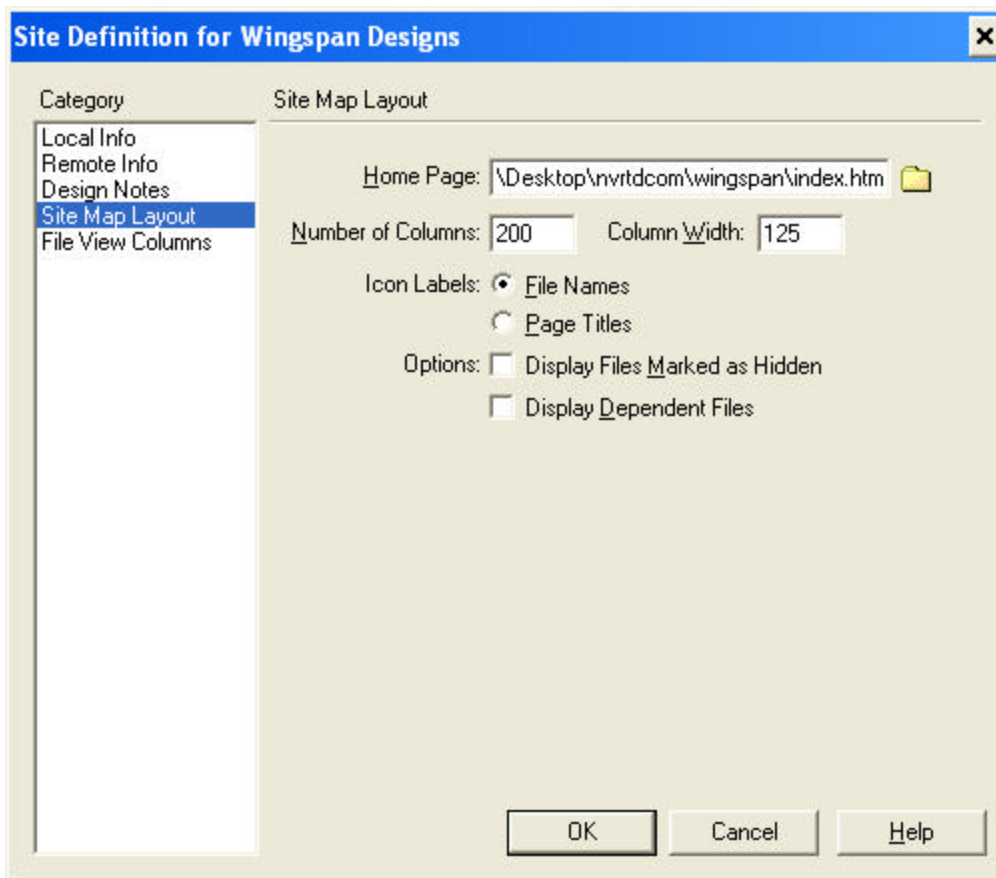
The screenshot shows a dialog box titled "Site Definition for Wingspan Designs". On the left, a "Category" list includes "Local Info", "Remote Info" (which is selected), "Design Notes", "Site Map Layout", and "File View Columns". The main area is titled "Remote Info" and contains the following fields and options:

- Access:** A dropdown menu set to "FTP".
- FTP Host:** A text box containing "ftp.geocities.com".
- Host Directory:** An empty text box.
- Login:** A text box containing "wingspandesigns".
- Password:** An empty text box, followed by a "Save" checkbox.
- Use Passive FTP
- Use Firewall (in Preferences)
- Check In/Out:** Enable File Check In and Check Out

At the bottom of the dialog are three buttons: "OK", "Cancel", and "Help".

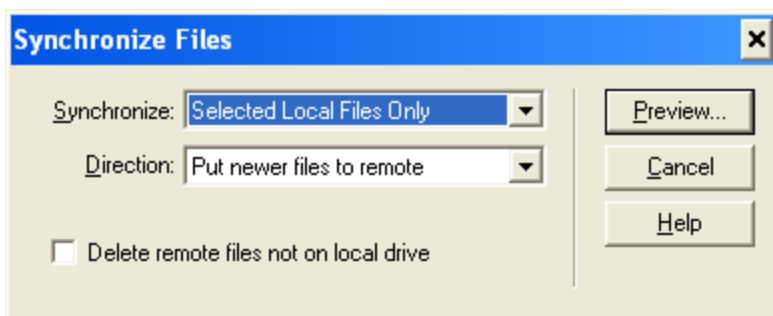
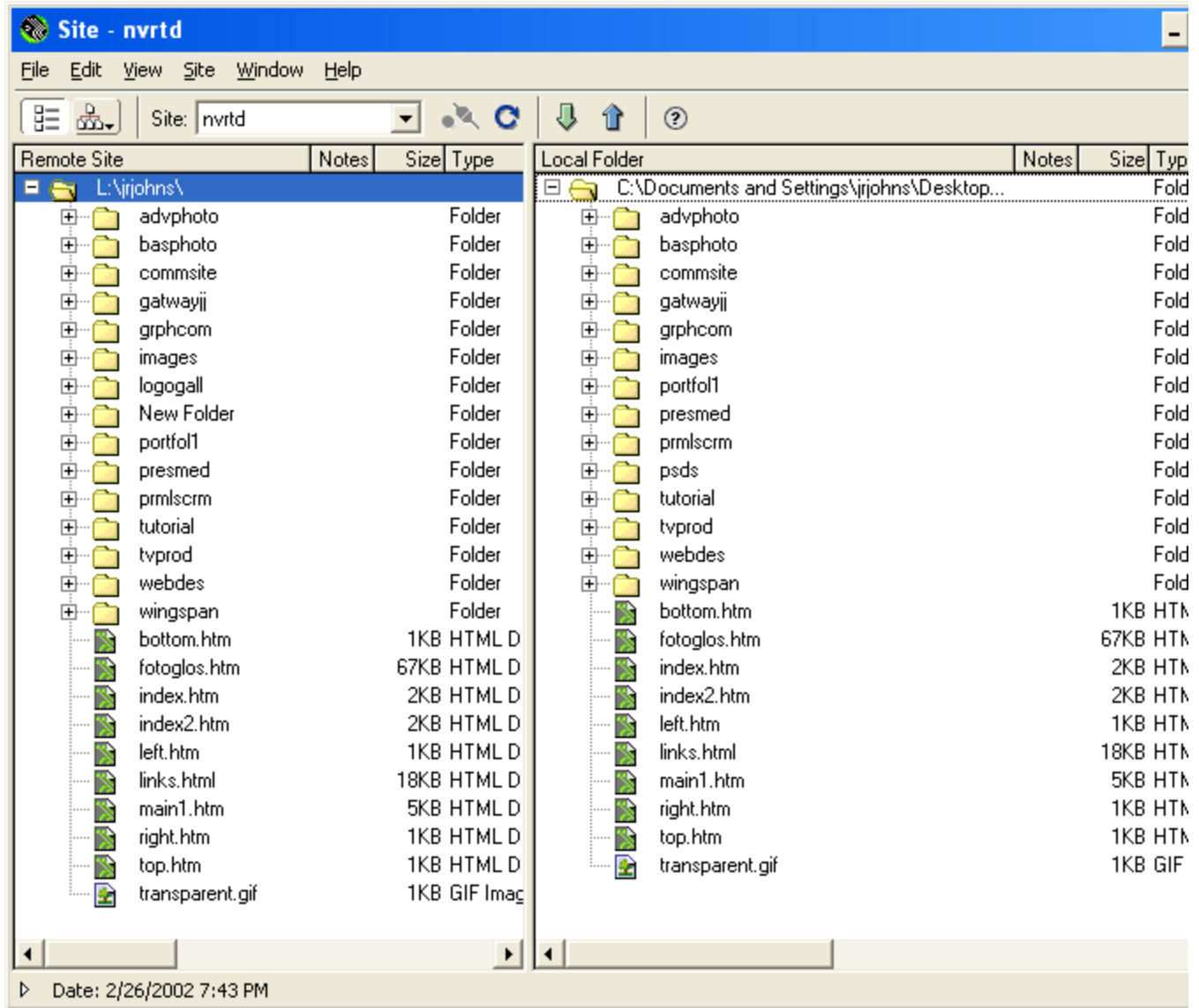
Step 4.

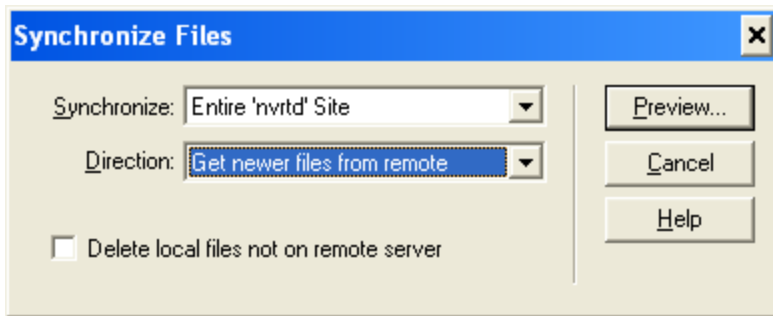
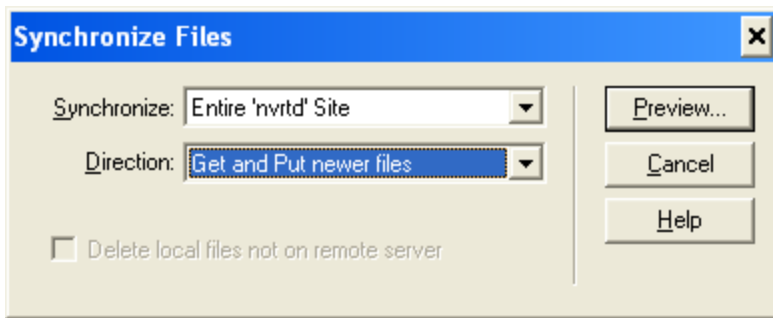
This step tells Dreamweaver where you want your site to begin. If you have a file called index (htm, html) in your Root Folder you can skip this step because the software will find your Home Page automatically.



Step 5.

Now you will be able to use most of Dreamweaver's Site Definition abilities. Below is the site "nvrt". The Local and the Remote folders are currently identical. With the Site window open (seen below) you can Get (receive) or Put (send) files to and from a server. You can also use the Site menu (in the main program window on a Mac) to choose the Synchronize command. The Synchronize tool is a powerful utility for site management.





Step 6.

Use the Site Map view (below, left) to help visualize and navigate the site. Make all changes to folders and names within this interface and Dreamweaver will update broken links created.

Site - nvrtd

File Edit View Site Window Help

Site: nvrtd

Site Navigation: index.htm

index.htm

left.htm top.htm main1.htm bottom.htm right.h

ijgtway.htm

portfol1.htm

video.h...

Frame...

grphea...

ijgtway...

resum...

index.htm

leftout...

topout...

main2...

botout...

rightou...

http...rtd.com

index.html

menu.h...

main.ht...

default.html

tutorial.htm

index.htm

index.html

default.html

100%

Local Folder	Notes	Size	Type
C:\Documents and S...			Fold
adyphoto			Fold
basphoto			Fold
commsite			Fold
gatewayj			Fold
grphcom			Fold
images			Fold
portfol1			Fold
presmed			Fold
prmlscm			Fold
psds			Fold
tutorial			Fold
tvprod			Fold
webdes			Fold
wingspan			Fold
bottom.htm		1KB	HTM
fotoglos.htm		67KB	HTM
index.htm		2KB	HTM
index2.htm		2KB	HTM
left.htm		1KB	HTM
links.html		18KB	HTM
main1.htm		5KB	HTM
right.htm		1KB	HTM
top.htm		1KB	HTM
transparent.gif		1KB	GIF

Update Files

Update links in the following files?

/commsite/comtest/default.html

/commsite/comtest/activity/default.html

/commsite/comtest/alumni/default.html

/commsite/comtest/faculty/default.html

/commsite/comtest/gened/default.html

/commsite/comtest/orient/default.html

/commsite/comtest/programs/default.html

Update

Don't Update

Help